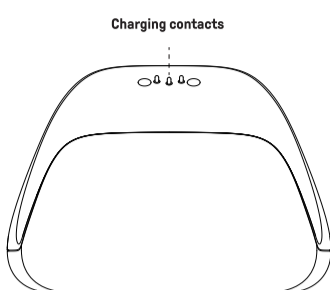
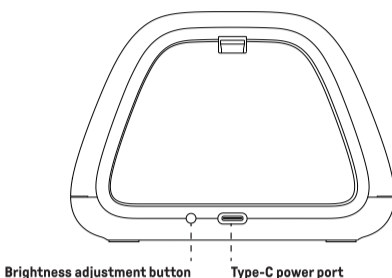


## Charging Dock for Xbox Wireless Controllers

### Top

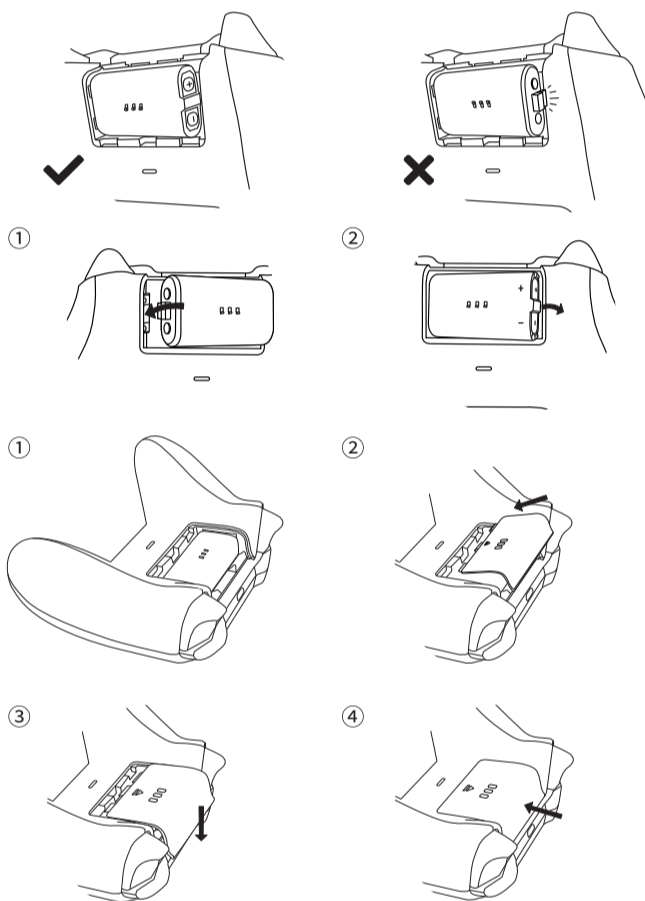


### Bottom



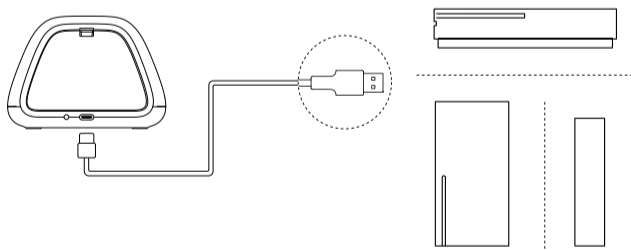
## Battery Installation

- Please ensure the battery is installed in the correct orientation. Incorrect installation may prevent the battery from charging and could lead to potential malfunctions
- There are two types of battery doors: one is compatible with Xbox One Wireless Controllers, and the other is compatible with Xbox Series Wireless Controllers



## Power Supply

- Please connect the charging dock to the USB port of your Xbox console via a USB cable



## Battery Charging

- Place the Xbox controller with the installed battery on the charging dock; the amber light will turn on and stay solid
- Built-in 1100mAh rechargeable battery with 22 hours of play time and with 3.5 hours charging time

## Power Indicator

- You can press the brightness control button to switch the power indicator light between bright and dim

Status –	LED indicator –
Power is on	White LED lights up for 3 seconds
Battery charging	Amber light stays solid
Charging error	Amber light blinks
Fully charged	White LED stays solid

## Safety Guidelines

- Leakage of ingredients contained within the battery pack, or the combustion products of the ingredients, can cause personal injury as well as damage to the game. Avoid contact with skin. If contact occurs, immediately wash thoroughly with soap and water. If liquid leaking from a battery pack into contact with your eyes, immediately flush thoroughly with water and see medical attention right away.
- To avoid battery leakage:
- Do not expose battery to excessive physical shock, vibration, or liquids
  - Do not disassemble, repair, or deform the battery
  - Do not dispose of battery pack in a fire
  - Do not touch the terminals of the battery, or cause a short circuit between the terminals with a metal object
  - Do not peel or damage the battery label
  - Replace only with the same type of battery pack
  - Insert batteries with the correct polarity

## Support

Please visit [support.8bitdo.com](http://support.8bitdo.com) for further information & additional support